

Hiroya Miura

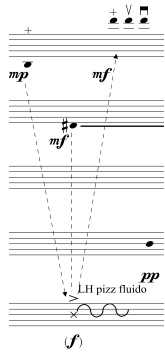
Lustral Shades

for shamisen, ryuteki, hichiriki, sho and cello

Work is co-commissioned by Institute for Medieval Japanese Studies and
Hidejiro Honjoh in 2018.

Performance Notes

Rhythms are notated spatially. Each measure contains 4 beats as indicated on top of each staff.
As timing is determined through interactions of individual players, performers must play directly from the score.
Durations are indicated by horizontal lines.



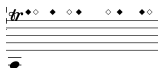
Order of events are sometimes indicated by arrows and synchronized events are indicated by vertical dashed lines.



Repeat notes in the box at irregular rhythm for the duration indicated by thick horizontal line while interrupting the pattern occasionally with a new set of given notes.



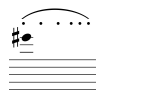
Circular motion with bow or bachi



Capo tasto trill
High natural harmonics played with only one finger at capo tasto sounding like intermittent morse signals on open string.



Pizz. fluido
Open string is plucked by left hand while the tension screw of the bow is placed lightly on the still vibrating string to produce a stopped pitch, ringing long enough to create glissando.



Gettato
Bounce the bow while drawing the bow slightly



Short fermata (2-3 seconds)

リズムは音符間の距離で表記され、便宜的に1小節4拍が振り当てられている。
奏者間の間合いによって曲が進行するため、演奏はスコアから行うものとする。

音価は横の線で示される。

音型の順序はときに破線の矢印で示される。
同時におこるべき音型は縦の破線で示される。

枠内の音型を自由なリズムで、太線で示された時間内反復する。
新しい音型が提示されたときには反復を一時中断し、音型を演奏した反復に戻る。

バチまたは弓で弦の上で弧を描く

カーポ・タスト トリル
弦の最上部を指で押さえ、開放弦で高次倍音をモールス信号のように出す。

「液状」ピチカート
左手でピチカートをし、弦が振動しているうちに弓のネジの部分に弦を当ててグリッサンドする。

ジェットアート
弓をやや引きながら弦の上でバウンドさせる

短いフェルマータ (2-3秒)

Some of the pitch material are derived from Mirabile Mysterum by Jacobus Gallus (1550-1591)

一部の音型はヤコブス・ガルス(1550-1591)によるミラビレ・ミステリウムから引用されている。

Lustral Shades

Hiroya Miura

The score is divided into systems, each with a measure number (1, 3, 5, 7, 9, 11, 13) on the left. The instruments are shamisen, cello, sha, and sho. The shamisen part includes fingerings (I, II, III) and techniques like 'bachi' and 'Nail Trem'. The cello part includes dynamics (ppp, p, f, mp, mf) and techniques like 's.t.', 'ord.', 'pizz.', and 'arco'. The sha part includes techniques like 'Nail Gliss' and 'Nail Trem'. The sho part includes dynamics (pp, mf, p) and techniques like 'delicato'. The score includes various musical notations such as slurs, accents, and dynamic markings.

*爪トレモロと同時に1と2の糸の振動を抑えてゆっくりバチで弧を描く

15

sha. *mf* *p* *mp* *pp*

sho. *pp* *mp* *p* *pp* LH pizz fluido

cello *p* m.s.p. *f*

norm.

wide vibrato between F/A while holding the open G

17

sha. *f* *ff* *mp* *mf*

ryu. *p* *ff* *mp* *p*

hic. *mf* *pp*

sho. *pp* *mp* *p*

cello *ppp* *fff* *ff* arco s.p. III

$\text{♩} = 36 (\text{♩} = 72)$ slow portamento

19

sha. *mp* *mf* *mp* *mf* *p*

ryu. *mp* *mf* *pp* *p*

hic.

sho.

cello *mp* *f* LH pizz fluido

$\text{♩} = 28 (\text{♩} = 56)$

slow portamento

21

sha. *p* *mp* *mf* *p* *f* *mp < f*

ryu. *p* *mf* *pp*

hic. *pp* *mf* *p*

sho.

cello *pp* stop trem. m.s.p. ord. legno batt. quick ord. *mp* *pp*

espress.

sha. *f* *sfz* *ff* *f* *mp* *tongue pizz.* *mp* *tongue pizz.*

ryu. *(f)* *p* *(f)*

hic.

sho.

cello *s.t.* *ord.* *mp* *p* *f* *pp* *pizz.* repeat pattern in nervously fluctuating rhythm

糸を指のひらで軽く触れる
発音の速度を一定にせずナーバスに

発音の速度を一定にせずナーバスに

sha. *mp* *pizz.* *pp* *mp*

ryu. *norm.* *p* *mf* *mp*

hic. *pp* *p* *p* *mp* *p*

sho. *pp*

cello *p* *mp*

パチスリ/trem.

sha. *mf* *f* *mp* *mf* *ff*

ryu. *p* *mf*

hic. *mf* *p* *mp* *p* *mf* *p* *mp* *pp* *mp* *p*

sho. *pp*

cello *pp* *fp* *pp* *mf* *p* *p* *pp*

bachi *ウ* *ウ* *ウ* *ウ* *bachi*

sha. *mf* *ff* *mf* *f* *ff* *Nail Gliss*

ryu. *mp* *mf* *p* *mp* *mf* *p*

hic. *mf* *p* *p* *mf* *p*

sho. *mp* *p*

cello *pp* *pp* *f* *mp*

31

sha.

ryu. *mf* *p* *mp* *p* *pp* *p*

hic. *mp* *p* *pp* *pp* *pp*

sho. *pp*

cello. *pp*

portamento

timbral

33

$\text{♩} = 25$ ($\text{♪} = 50$)

sha.

ryu. *mp* *pp* *pp* *pp* *pp* *p*

hic. *p* *pp* *p* *mp* *pp* *p*

sho. *p* *mp*

cello. *mp* *p*

portamento 音程は正確である必要は無い

トレモロしつつ唇のみでポルタメント

35

sha. *mp* *p* *mp*

ryu. *p*

hic. *p*

sho. *p* *pp* *p* *ppp* *pp* *mp*

cello. *p* *p*

bachi

テ

中

37

sha. *pp* *p* *mp* *pp* *p* *mp* *p* *pp* *pp*

ryu. *p* *pp* *pp* *pp* *pp* *pp*

hic. *pp* *mp* *p* *pp* *pp*

sho. *pp* *mp* *p* *pp* *pp*

cello. *p* *pp* *pp* *pp* *pp* *pp* *pp* *pp*

bachi

(F# to C#)

legno batt. quick

♩ = 32 (♩ = 64)

sha. flutt. *ff* timbral *ff* *sfz* overtone gliss. *mf* *mp* Nail Gliss.

ryu. *ff* *mp* *p* *sffz* *p*

hic. *pp* *mp* *pp* *mp* *p*

sho. *ff* *mp* *p*

cello. *p* stop trem. pizz. *sfz* *pp* *ff* arco *fp* ord. *p* s.p. (*f*)

sha. *mp* *f* *mp* *mf* *sfz*

ryu. *pp* *p* *mp* *mf* *sfz*

hic. *mp* *p* *mp* *p* *mp* *mf*

sho. *mp* *f* *mp* *p*

cello. ord. (*f*) *p* quick *f* *mp* *p*

sha. *mp* *ff* *f* *mf* *f* *mf* *sfz*

ryu. *ff* *p* *mf* *mp* *mf*

hic. *pp* *p* *mp*

sho. *p* *mf* *p* *mp*

cello. *fp*

♩ = 28 (♩ = 56)

sha. *f* *ff* *f*



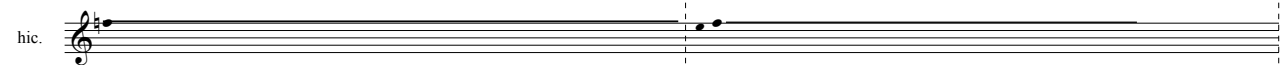
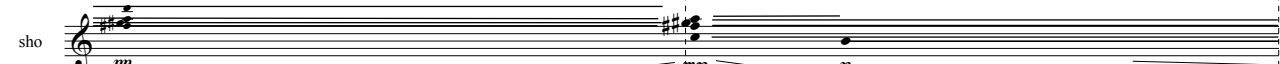
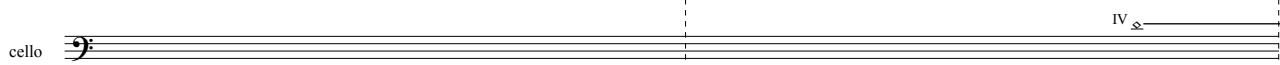
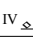
ryu. *f* *sfz* *sfz* *ff* *p* *mp*

hic. *mf* *f* *B* *C#* *ff* *mp* *sfz* *p*

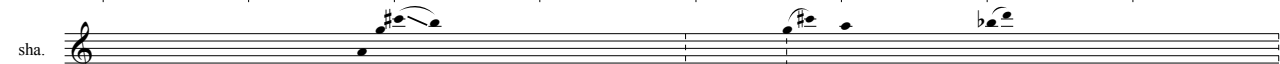
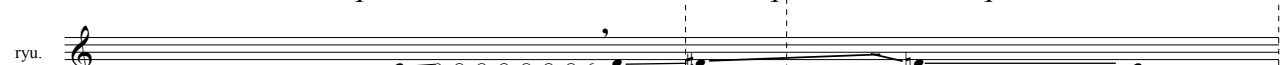


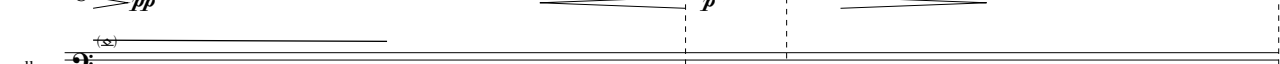
sho. *fp* *mp* *f* *sfz* *p* *pp* *D* *A* *G#* *F#*

cello. stop trem. *fp* *mf* *f* *mf* *f* *sfz* (*f*) LH pizz fluido




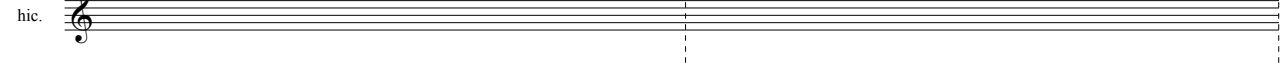

47 | | | | | | | |

sha. 
ryu. 
hic. 
sho. 
cello 
IV 

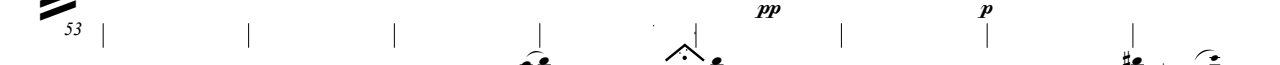
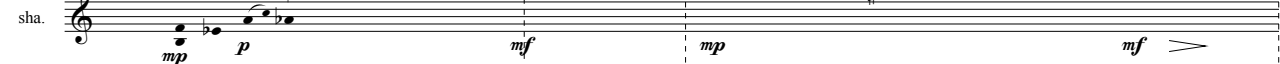
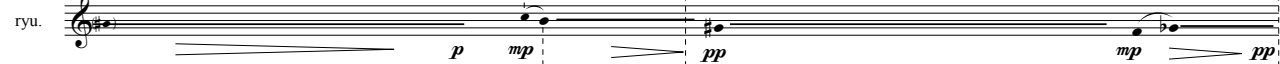
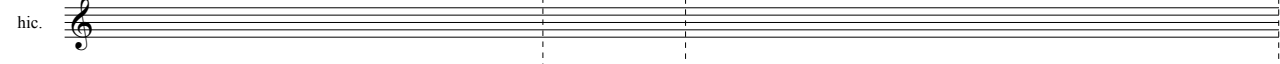

49 | | | | | | | |

sha. 
ryu. 
hic. 
sho. 
cello 
(∞)

51 | | | | | | | |

sha. 
ryu. 
hic. 
sho. 
cello 
stop trem.

53 | | | | | | | |

sha. 
ryu. 
hic. 
sho. 
cello 
pp

sha. *p mp f mf p > pp* *tempo*

ryu. *mp pp p > pp p > ppp*

hic. *p mp p pp*

sho. *p*

cello *tempo p poco s.p. mp < p*

sha. *mp mf p p mf p* *tempo*

ryu. *mp p pp p*

hic. *p < mp sfz > p < mp pp*

sho. *p pp < p*

cello *ord. p < mf mp p mp*

sha. *f mf mf mp*

ryu. *mp p mp < mp > p*

hic. *pp < > < > < > < >*

sho. *mf mp p mf mp p mp*

cello *p fp*

sha. *mp p pp mf > pp*

ryu.

hic.

sho. *pp p > p > pp p >*

cello *pp < mp pp < mp pp mf > pp* *s.p.*